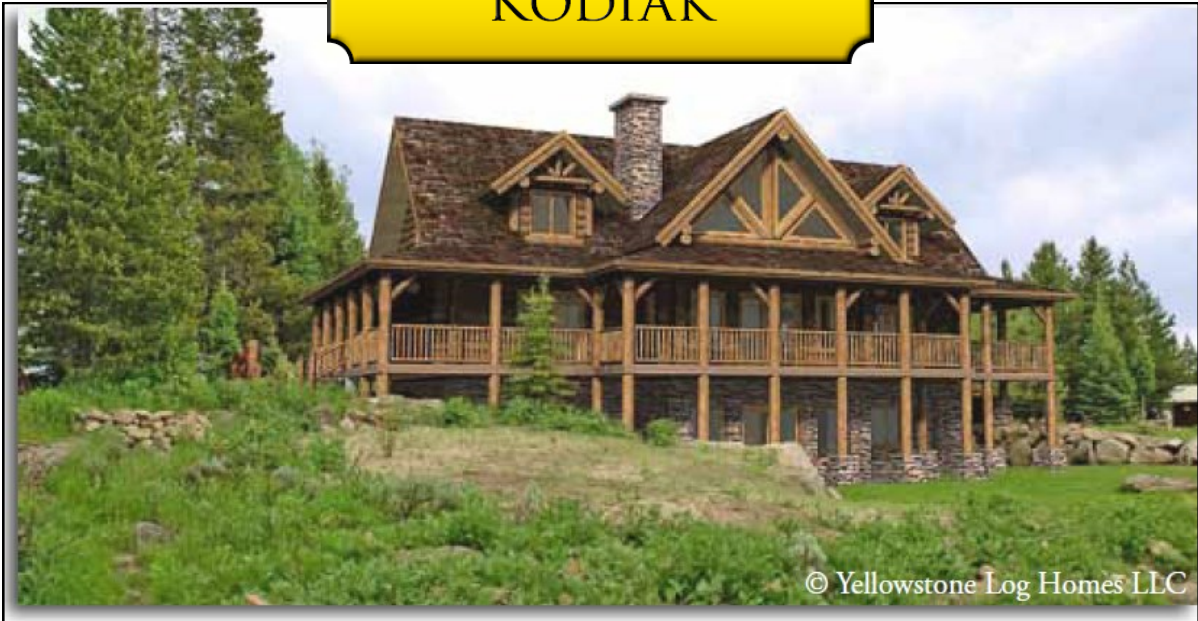
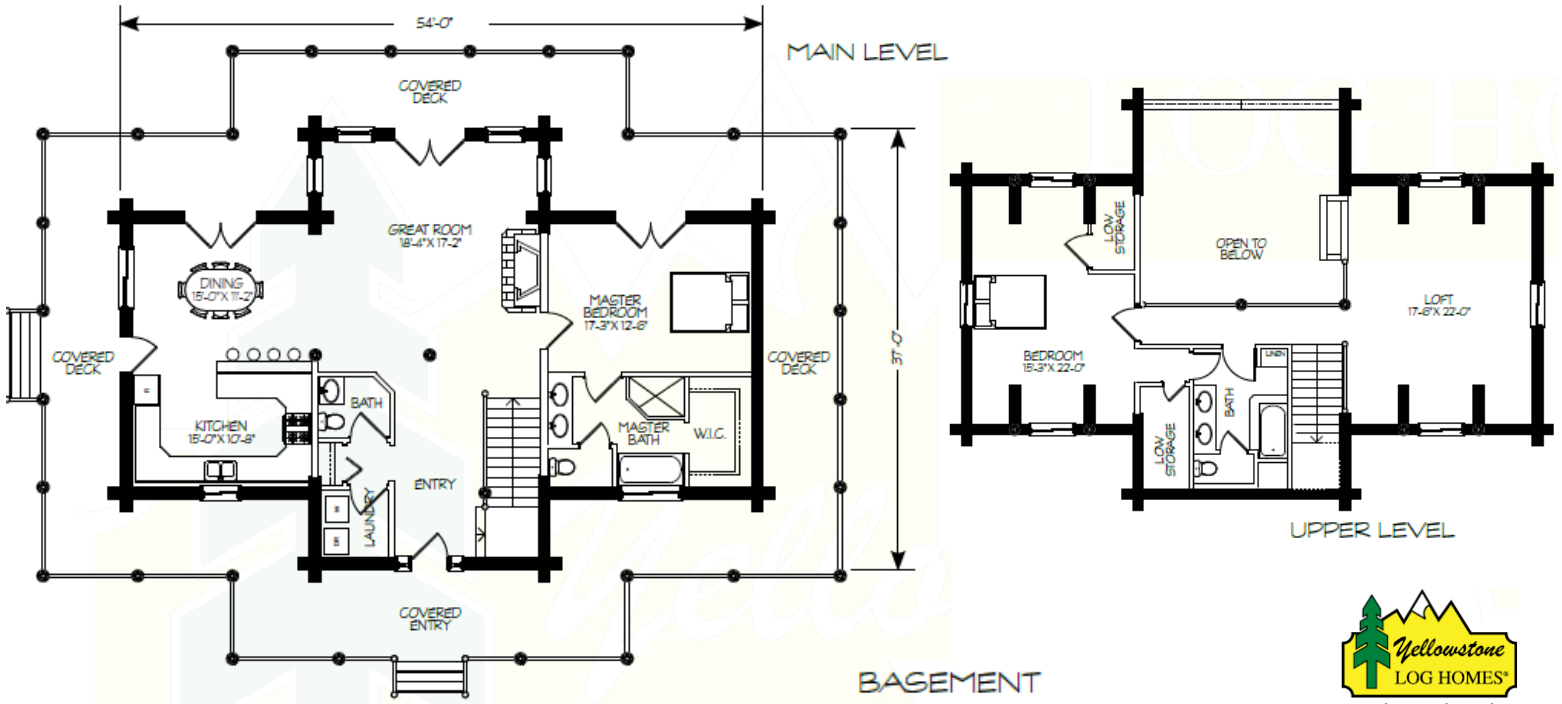


# KODIAK

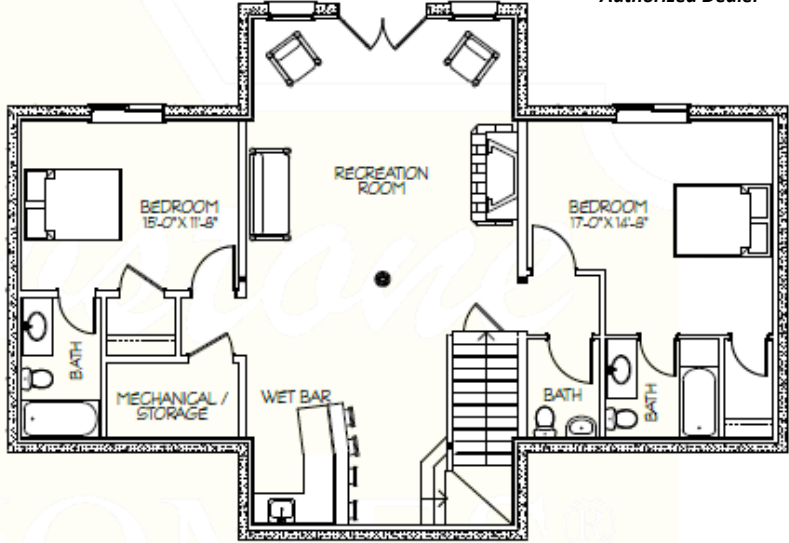


© Yellowstone Log Homes LLC



MAIN LEVEL	1,556 SF
UPPER LEVEL	1,010 SF
BASEMENT	1,556 SF
TOTAL AREA	4,122 SF

**UTE COUNTRY HOMES, LLC**  
 P.O. BOX 757  
 PAGOSA SPRINGS, CO 81147  
**970-731-3555**  
 WWW.UTECOUNTRYHOMES.COM



The KODIAK Premium Package with 8" Swedish Cope Cabin Appearance Logs

\$83,936.00 *(shipping & taxes not included)*

*Additional log profiles available, please call for quote*

**PREMIUM PACKAGE INCLUDES** (if shown on prints)

Construction Guide	Log loft floor joists
All log walls shown on print	Log stair set
Log home screws	Log porch posts
Exterior log home stain	Log railing
Foam gasket	2 x 6 T&G <i>(for loft floor decking)</i>
Log home caulking	1 x 6 T&G <i>(below roof over living area)</i>
Log roof beams	TP <sup>®</sup> graded beams & wall logs
Log support posts	Log porch header

**ELITE DRY-IN PACKAGE INCLUDES**

*(Please call for complete package list and current prices 970-731-3555)*

Metal drip ledge for eave & gable	Douglas fir 2X framing for exterior decks
1X cedar two step fascia	Sub floor adhesive
OSB rim board for eaves	4' x 8' sheets of ¾" T&G OSB
Architectural shingles	Wooden I-Joists & LVL's for subfloor
Wooden I-Joists & LVL's for roof rafters	2 X pressure treat for sill plate
Roofing felt / ice & water shield	Sill sealer
4' x 8' sheets of OSB	OSB rim board for subfloor
Blocking between wooden I-Joist	4' x 8' sheets of T1-11 subfloor fascia
2X framing for interior walls	⅝" couplers and allthread
Double 2 x 6 for window bucking	Vinyl windows <i>(or upgrade to wood windows)</i>
Metal drip ledge for subfloor	Exterior doors
Redwood decking <i>(or upgrade to trex)</i>	Conventional frame stair material <i>(if not drawn as log stair set)</i>